



ANGMERING VILLAGE TRAIL 2025

READY FOR AN ADVENTURE?

Follow the clues and see where the trail takes you!

IMPORTANT INFORMATION

- You can stop whenever you like and pick the trail back up another day
- We have added a new area to explore this year, just follow the directions within the questions. You just need to choose which way you go and what order you answer the questions in, it sounds trickier than it actually is
- The whole trail covers about 2 miles if you answer all the questions
- You will find Butterflies along the way, how many can you find on this question sheet?
- Maybe take a drink with you to keep your explorer energy up

ONE RULE, because even adventures need one:
Cross all roads carefully, remember safety first

Good luck, and most of all... have fun

READY, STEADY, GO!



CAN YOU FIND US ALONG THE WAY?

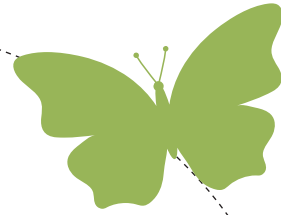
HOW MANY BUTTERFLIES DID YOU FIND ON THIS QUESTION SHEET?



QUESTION 1:

The first question is about the War Memorial and other items on the Village Green.

1. What years are displayed on the memorial?
2. What is the memorial in remembrance of?
3. What can you fill up with?
4. How many butterflies can you see in the trees



ANSWER:

QUESTION 2:

There are seven places to get something to eat and or drink around the Village Square, what are they called?

(Co-op not included!)

ANSWER:

QUESTION 3:

In the windows of Graham Butts & Cooper Adams Estate Agents are some knitted items – what are they?

For a bonus point how many knitted items can you count in Graham Butts window?

ANSWER:

QUESTION 4:

There are three new additions to the shops in the village, what are they? Here are some clues:

- One uses ink
- One uses a file
- And the other one uses a brush

Can you name them?

ANSWER:

QUESTION 5:

Next to the Co-op there is a post box, what time is the LATER* collection? And for an extra point what is the post box number?

*Be sure to read the information carefully to be able to answer this correctly!

ANSWER:

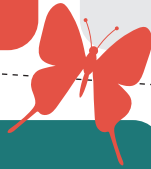


QUESTION 6:

Now walk along Station Road to the Village Hall and answer the following:

1. What year did the hall open?
2. What kind of pole is located here?
3. What date were the benches put in, you might need to bend down to see!
4. Are there any butterflies here, if yes where?

ANSWER:



QUESTION 7:

Turn round and walk back towards The Lamb Pub. Before you get to The Lamb Pub you will pass Pooks Cottage. Outside the cottage is a soldier. What type of soldier is he?

ANSWER:

QUESTION 8:

Just past The Lamb Pub and next to two houses is a Twitten, walk up the Twitten and at the top turn left onto Lansdowne Road. At the end of Lansdowne Road you will find a house for bees, what is the correct name for this house?

FUN FACT: A Twitten is a narrow path between two walls/hedges etc.

ANSWER:



QUESTION 9:

You now need to safely cross the road, and you will be on Fletchers Field. There are three questions to answer here:

1. The Scout's, based in the hut on Fletcher's Field, are about to open a new section called Squirrels in September 2025. What age range does this cover? Look for a purple sign on the side of the hut to find out.
2. What year was the field given to the parish of Angmering? And for an extra point what was Lady Fletchers first name?
3. How many play items are there in the Fletchers Field Play Park.

Here's a clue for question 2: Look at the wall by the play park

ANSWER:

QUESTION 10:

These next questions are all about St Margaret's Church which is located next to Fletchers Field.

Please note that to answer questions about inside the Church you won't be able to do this until after Monday 28 July.

1. Go through the Church gate and look for a large Yew Tree close to Fletchers Field, when was the tree planted? You may need to look up!

Now go into the Church (The church is open Monday to Friday between 9.30am – 12.30pm). You need to go through the wooden door, which is down the steps at the side of the church.

2. To the rear of the church you will find the organ, how many silver pipes can you count? However did you know that in total this organ has a lot more pipes than you can see, in fact it has 600!
3. On one of the stone columns there is a small bird – if you can find the bird what is the column next to? You'll need to look up again.

.....
FUN FACT: When the columns were being built a robin used to fly into the church every day and to remember their feathered friend the Stone Masons carved and painted a robin into the column. This is something they should not have really done but we are glad they did as its very rare to see something like this and is a lovely reminder.
.....

4. Before you go back through the gate at the front of the church, which by the way is called the Lych Gate, can you see when it was restored?

ANSWER:



QUESTION 11:

Opposite St Margaret's Church across the road is **Angmering Library**, how many steps do you have to climb to get to the library entrance? Top tip count from the bottom up!

Next go into the library and out into the garden - how many knitted butterflies can you see?

For an extra point there is one butterfly located inside the library, can you find it and if so, where was it?

The library is open:

Monday to Wednesday 1pm to 5pm and

Thursday to Saturday 9am to 1pm

ANSWER:



QUESTION 12:

From the Library go into St Nicholas' Garden, the entrance is at the top of the stairs to the right.

1. What year was the Garden of Peace planted?
2. If you're tired stay awhile - how many benches could you choose to sit on?
3. What year did the Archaeological Dig take place?

ANSWER:



QUESTION 13:

Now walk through St Nicholas' Gardens round the back of The Lamb pub and cross the road to **Fiona J Rose Art Gallery** (be careful when crossing the road). From the window you will see a display of butterflies hanging from the ceiling, what colours are the butterflies?

ANSWER:



QUESTION 14:

The next question can be found in the Angmering Parish Council Office window. The office is on the corner.

1. What item is twinned?
2. Where in the world is the twin?
3. Can you spot some knitted butterflies in the window, how many can you see?
4. How many butterfly facts can you see?

For an extra 5 points, complete the mini butterfly quiz. Come in to the office to get your quiz sheet.



ANSWER:



QUESTION 15:

To the left side of the Parish Council office on the wall is a noticeboard before you head up the High Street. Can you spot the 5 differences in the poster and solve the puzzle?



ANSWER:

QUESTION 16:

Now walk up the hill you will come to The Cottrells entrance on your right, cross over the road and you will see a lamp post, what number is on this lamppost?

FUN FACT: Did you know that all lampposts have a number. So if you see one that's damaged or not working you can tell West Sussex County Council and they will know exactly which one needs looking at.

ANSWER:

QUESTION 17:

Keep walking up the High Street, past Honey Lane and you'll come to Angmering Manor – what is Angmering Manor?

ANSWER:

QUESTION 18:

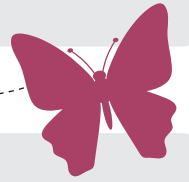
Continue on and you will see the most amazing tree. What do you think it looks like? Some say it looks like a sweet on a stick.

ANSWER:

QUESTION 19:

Just past the tree you will find another house with two very large birds guarding its entrance, what type of birds are they?

ANSWER:



QUESTION 20:

Keep walking up the High Street and you will come to a small triangle of grass in the middle of the road with a white signpost on it – what direction is the sign for East Preston & Ferring facing (north, south, east or west?)

FUN FACT: Did you know that this is a traditional signpost and is called a Fingerpost, also known as a finger post sign. They have a rich history in England, originating in the late 16th century and becoming increasingly common during the 17th and 18th centuries. Initially used as a means of navigation for travelers, especially those on horseback or in horse-drawn carriages, they evolved into a distinct part of the English country scene.

ANSWER:



QUESTION 21:

Continue walking up the High Street and you will eventually get to a traditional pub, what animal is this pub named after?

ANSWER:



At this point you can choose to turn round and go straight to **Question 23** and continue with the questions in the order they are written OR you can choose **Question 22** and follow the instructions.



QUESTION 22:

Walk past the pub and a bit further on opposite the car park you will see a lane on your right, this is called Cow Lane. If you walk down Cow Lane to the end you will come out at the A259 on the junction with the A280. However half way down you will see some playing fields – what sport takes place here?

Walk through this sports area and you will come out onto Roundstone Lane. Turn left and walk down to the roundabout and turn left on to Bramley Way. Follow this road to the end and you will come out onto Rowan Way. Turn left onto Rowan Way and walk down to Mayflower Park and pick the trail back up at **Question 27**.

ANSWER:



QUESTION 23:

Turn round and walk back down the High Street until you get to Honey Lane. Start to walk down Honey Lane and you will immediately see three white cottages on your right, what is the name of the middle cottage?
Walk a little further down Honey Lane and you will see a large gate on your left, what gold items can you see?

ANSWER:



QUESTION 24:

Follow the lane to the end where you will find the Honey Lane Allotments. Just inside you will see a big yellow box, what's inside the box?
Feel free to walk around the allotments to see everything that is being grown and maybe spot a butterfly or two!
Please make sure you stick to the pathways.

ANSWER:



QUESTION 25:

From Honey Lane make your way onto Bramley Green through the alley way towards **Angmering Community Centre**. This question is all about things in and around the Community Centre, there are 8 questions to answer:

1. Somewhere around the Community Centre building you will find a dog sitting on a bench. What kind of flower does the dog have in its mouth?
2. Within the play park what can you jump up and down on?
3. What kind of pole can you see on the grass area to the side of the Community Centre?
4. What kind of locker is located on the side of the Community Centre
5. At the front of the Community Centre there is a repair centre, what can you repair here?
6. At the front of the centre is a curved wall, what is carved in some of the bricks?
7. Somewhere in the entrance area there is a butterfly, what colour is it?
8. In the hallway of the Community Centre there is a board called The Fred Rowley Award. Who won this award in 2023?
To find out more about The Fred Rowley Award use the QR code at the bottom of the board.

ANSWER:



QUESTION 26:

Walk down Rowan Way towards Mayflower Park. On the way how many trees can you count? Start at the Community Centre so you don't miss any.

Just before you enter Mayflower Park what is the name of the school on your right?

ANSWER:



QUESTION 27:

Now you've reached Mayflower Park, there are a few things to answer here!

1. What kind of bowl will you find here?
2. How many humps are there on the BMX track?
3. How do the lampposts work?
4. There is a walkway around the pond, how many planks of wood makeup the walkway?
5. There is a new bike track next to the BMX track, its shaped like a number, what number is it shaped like?

ANSWER:



Your walking adventure is now finished however If you missed out Questions 23 – 26 you could always turn round and do these backwards!

We hope you have enjoyed your walk and learnt some new things along the way however we have three more questions before you're be done.

QUESTION 28:

There are 13 public defibrillators in Angmering can you name at least three locations?

For a clue look at the APC Noticeboards which can be found outside the Co-op, on Arundel Road by St Margaret's School, outside the Community Centre, the side wall of the Parish Office and by the shops in Downsway.

ANSWER:



QUESTION 29:

What items can you recycle at the Angmering Parish Council Office - look at the APC Facebook page or pop in to the office for a leaflet.

ANSWER:



QUESTION 30:

This is the final clue: Look on the Angmering Parish Council website at the Welcome Guide or pop into the office for a copy, you never know what else you may find out!

Angmering has many play parks, two of which you have already visited on this trail. So where are the others located? Here are the names to start you off:

- Blenheim
- Braeburn
- Pippin
- Skate Park & BMX Track
- Discovery Play Park

ANSWER:



Congratulations!

You have completed the trail.

Please return your form to the parish office and receive your reward.

A BIG thank you to the Angmering Yarn Bombers for all the fabulous knitted butterflies found along this trail and to Graham Butts, Cooper Adams and Fiona J Rose Art Gallery for allowing us to display in their windows.

If you have any suggestions on areas to cover for next year's trail please let us know as we'd love to hear them.



Angmering Parish Council

Tel: 01903 772124

Web: www.angmering-pc.gov.uk

Email: admin@angmering-pc.gov.uk

The Corner House, The Square, Angmering, West Sussex, BN16 4EA