



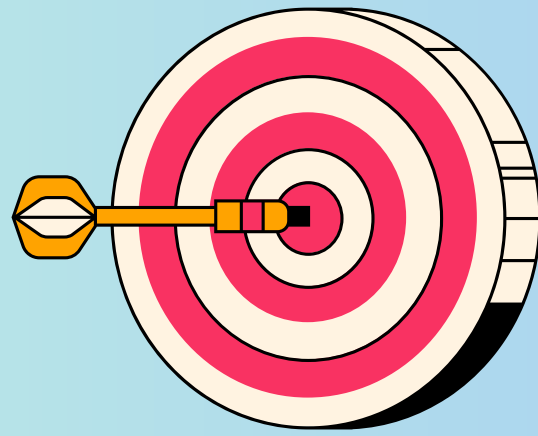
# Climate Action Plan



The idea behind the name is not to use words such as crisis, disaster or extinction but a simple guide to how we can all help

## Aims

To do what we can as a council within our responsibilities and make representation to other organisations as appropriate.

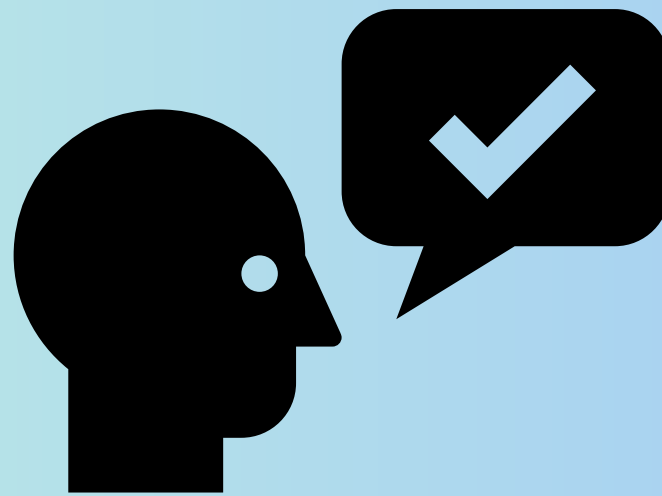


To encourage residents to think about actions they could take by providing information and support.

Utilise West Sussex and other organisations tips and hints, passing them onto residents through communication.

## APC will...

Ensure that residents are kept up to date on what the council is doing to tackle climate change.



By instigating behavioural change within the council important steps towards large emission reductions can be started.

Develop Carbon Literacy Training and set up a local group to develop and support ideas.

Contact the office with any suggestions you have

Tel: 01903 772124

Email: [admin@angmering-pc.gov.uk](mailto:admin@angmering-pc.gov.uk)

No one is too small to make a difference

Think globally act locally

### **Buildings:**

**Review opportunities to install eco devices and opportunities to reduce water consumption in central buildings in the village. Undertake a base level figure and have regular monitoring of their emissions.**

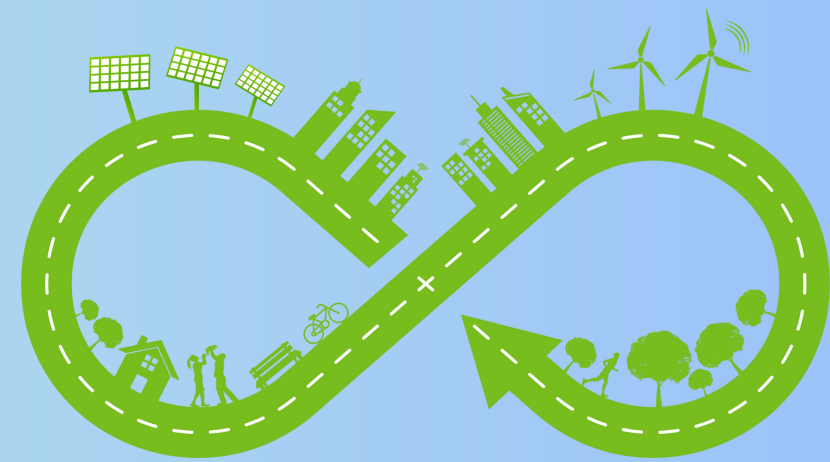


### **Transport:**

**Look to develop the provision of an electric vehicle for the council. Support the development and use of charging points in the village. Consider the provision of safe active travel routes (walking and cycling) and to help reduce traffic emissions and congestion.**

### **Planning:**

**Ensure access to sustainable transport routes are considered in planning applications. Request developers to incorporate resilience and adaption measures into developments.**



### **Waste:**

**Work with local businesses to encourage less waste for landfill and reduction in single use plastic. Support, encourage and communicate the recycling policy of West Sussex Recycling Centre. Develop TerraCycle in the village and other useful areas for development, such as batteries. Outline without favour or promotion companies that will take a variety of other waste e.g. pet food packets.**



### **Biodiversity:**

**Encourage and support the development of more woodland, greener spaces and the creation and protection of wildflower areas and areas of long grass. Monitor new estates to check original provision of trees and green spaces is maintained. Undertake a Biodiversity study and produce a Biodiversity plan.**



### **Supply Chain:**

**Look to favour local businesses when providing a service to reduce mileage. Aim to encourage reduction in packaging, plastic goods and other goods which have an adverse environmental impact. Review procurement policy so contractors are carbon neutral or have plans in place to address their emissions. Work with current suppliers to increase their understanding of emission data.**